



Supporting Tomorrow's Dairy Leaders!

ANNUAL NEWSLETTER ISSUE 10 APRIL 2011

Board of Directors

President: Randy BeVier, *at-large*

Vice-president: Chuck Courtade
Dairy Farmers of America

Secretary: Miriam Weber Nielsen
MSU Dept of Animal Science

Dan Bates, *at-large*

Bruce BeVier, *at-large*

Nancy Blaauw, *at-large*

Sheila Burkhardt, *at-large*

John Dilland, *at-large*

Russel Erickson

MSU Dept of Animal Science

Mike Fordyce, *Land O'Lakes*

Eric Frahm

Michigan Milk Producers Association

Clay Galarneau

Michigan Milk Producers Association

Ken Gasper, *NorthStar Cooperative*

Velmar Green

Michigan Milk Producers Association

Megan Hirschman, *CANR External Relations*

Bryan Hull, *Dairy Farmers of America*

Chris Kindsvatter

Michigan Dairy Foods Association

Dana Sue Kirk, *at-large*

Bob McDowell, *at-large*

Dwight Nash, *Dairy Farmers of America*

Tom Nugent, *at-large*

Gary Nelsen, *at-large*

John Partridge, *MSU Dept of Food Science and Human Nutrition*

John Pell, *Dairy Farmers of America*

Mark Pollard, *at-large*

Remus Rigg, *at-large*

Gene Sickels, *at-large*

Torben Siggaard, *at-large*

John Stout, *at-large*

Gerald Surbrook, *at-large*

Brian Troyer, *at-large*

Mark Uebersax, *MSU Dept of Food Science and Human Nutrition*



MDMSF 2009-10 scholarship recipients participated in the 2010 Annual Meeting of the MDMSF board of directors. Pictured left to right: Max Dunneback Jr., Christine Hadley, Trent Hooks, Kelsey Byars, Brandon Gingrich, Nicole Schaendorf, Michelle Dawes, Gail Carpenter, Joe Ankley, Karmen Jackson, Henry Reinart, Rosemary Rice, James Weber, Sara Girbach, Hannah Tucker.

The John and Barbara Dilland Michigan Dairy Memorial Scholarship to benefit students pursuing agribusiness degree at MSU

In 2010, the MDMSF added yet another endowed scholarship for students pursuing a career in the dairy industry. The John and Barbara Dilland Michigan Dairy Memorial Scholarship will benefit sophomores, juniors and seniors majoring in the field of agribusiness management in the College of Agriculture and Natural Resources (CANR) at MSU.

The Michigan Milk Producers Association (MMPA) established the scholarship in the name of John Dilland and his wife, Barbara, through the Michigan Dairy Memorial and Scholarship Foundation in recognition of John Dilland's retirement from MMPA.

"The MMPA Board of Directors made this tribute to recognize John's 35 years of service to MMPA and his strong business management skills that he used to help shape MMPA into the successful dairy cooperative it is today," says Ken Nobis, MMPA president. "This contribution also recognizes John's desire to provide educational opportunities to students pursuing careers in agribusiness management."

Dilland is a former controller, director of finance and general manager for MMPA. Besides his involvement in MMPA, he has served in leadership capacities on several national organizations including the National Council of Farmer Cooperatives, the National Milk Producers Federation and the Innovation Center for U.S. Dairy. Here in Michigan, he served on the Board of Directors for the Michigan FFA Foundation and the Michigan Dairy Memorial and Scholarship Foundation.





MDMSF Honorees

One of the ways the MDMSF grows its endowment fund is through the honoring of individuals for their distinguished service to Michigan's dairy industry. More than 180 individuals have been named MDMSF Honorees since the foundation's establishment over 50 years ago.

A gift of \$1,000 or more to the MDMSF provides permanent recognition and honors a dairy leader for their service and contributions to the dairy industry. Foundation honorees receive personal recognition from the foundation and their names are inscribed on a plaque in Anthony Hall at MSU. In addition, their biography and photograph are kept in permanent records in the MSU Department of Animal Science. In addition, photographs of MDMSF Honorees are now on display at the MSU Pavilion.

The items needed for naming an MDMSF Honoree include: a \$1,000 contribution to the MDMSF, an 8 X 10 photo of the honoree and a one page biography on the honoree. Many times the presentation to an MDMSF Honoree is given at an industry or MDMSF event. At other times, an individual is honored posthumously for their service to the industry by making a presentation to the deceased honoree's family.

By honoring individuals through the MDMSF, donors are not only recognizing individuals for their accomplishments in the industry, but they are also investing and providing support to future dairy leaders. As the foundation endowment grows, additional scholarships can be awarded. With the increasing cost of higher education, scholarships often make the critical difference in the lives of students, enabling them to achieve their dreams for the future.

Naming someone as a MDMSF Honoree is a fitting tribute for recognizing someone who has served this great industry of ours. If you are interested in honoring someone through the MDMSF contact:

Any MDMSF board member

Dr. Miriam Weber at 517-432-5443 or maw@msu.edu

CANR Development office at (517) 355-0284

President's Message

As another year goes by... at a time when the governor has cut aid deeply to education at all levels and there has been significant restructuring within Michigan State University and its programs, there continues to be a need for both links to the past and access to financial scholarship assistance as we prepare students for challenges and change in the future.

Over the course of the last 50 plus years the MDMSF has provided scholarship assistance to hundreds of students at MSU working toward their degrees and certificates in dairy related curriculum as they prepare for their future in the dairy industry.

Our industry is changing. Markets are evolving and becoming more global in nature. Weather in drought stricken areas of other parts of the world, expanding markets in Asia, and the politics of the Middle East and Africa are having an increasing impact on our agricultural commodities and agri-business management. The safety of our food supply is being debated and brought into focus. The demand for successful students adequately prepared to step up and manage these challenges is strong. The need to support these students in their academic pursuits in preparing for these challenges is equally strong. Dairy is the number one segment in Michigan agriculture.

The MDMSF has a long history of commitment to the dairy industry. Naming someone as an honoree is an excellent way for donors to honor the legacy of loved ones or respected colleagues in the industry while at the same time providing that link to the future by providing much needed financial assistance to students with a strong interest in dairy.

This past year 28 scholarships totaling approximately \$90,000 were awarded. There are a number of legacy scholarships endowed in memoriam to outstanding individuals and couples who have been active in our industry. What better tribute to honor one's accomplishments than through a memorial endowment for the future? I strongly encourage individuals to contribute. As we prepare for the future it is needed and appreciated at the University level. It is needed and necessary to prepare students for the dynamic changes in our markets, and it is needed and appreciated by our students and their families as they struggle to cope with a challenging economy. I also encourage students with an interest in dairy to apply for this financial support to assure the future viability and strength of the MI Dairy Industry for the future.

The MDMSF provides that link honoring the past and preparing for the future.

Randy BeVier,
President, MDMSF



Mark Your Calendar!

September 27, 2011: Deadline for freshman, Ag Tech and vet student scholarship applications

February 28, 2012: Deadline for scholarship applications
(new and renewal applications for 4-year students at www.ans.msu.edu)

April 20, 2012: Annual meeting of MDMSF Board of Directors

*For more information about MDMSF Scholarships, visit
<http://www.canr.msu.edu/dept/ans/academics/index.html>
and click on the scholarship link.*

2010 Dairy Memorial Honorees

Keith LaMarre Brown

Keith L. Brown graduated from Michigan State University in 1954 with a bachelor's degree in animal husbandry. He and his family owned and operated Brownson Farms and the Horse and Carriage Bed and Breakfast, both in Jonesville. They raised registered Holsteins, Percheron draft horses, Shetland sheep and Duroc hogs for seven decades. In 1985 the family farm was designated a sesquicentennial farm – 150 years old.



Brown was extremely active in various political, agricultural and community activities. Brown was district director for Congressman Nick Smith from 1997 to 2004 and served 15 years on the Moscow Township board, serving 12 years as township supervisor. He was also a Kellogg National Leadership Program group III advisor. Brown served as Jonesville Lions Club president, Hillsdale County Fair board president, Michigan Dairy Memorial and Scholarship Foundation past president, and Michigan Centennial Farm Association past president.

He also participated on the Hillsdale County GOP Executive Committee, Hillsdale County Extension Advisory Committee and Michigan Farm Bureau State Policy Development Committee. He was a founding member of Hillsdale Hay Inc. and filled the combined role of secretary/treasurer. Brown was a national board member for Select Sires, Inc. from 1988-1993 as well as being active with several Select Sires committees for 12 years. He also provided leadership on the board of directors for MABC-Select Sires (now known as NorthStar Cooperative) from 1978-1993, of which six years he was board president.

Brown was also Jonesville School board president, Michigan Holstein Association past president, Michigan Purebred Dairy Cattle Association past president, and Michigan Board of Veterinary Medicine lay member. He received the 1981 MSU College of Agriculture and Natural Resources Distinguished Service Award and was named the 1982 MSU Dairyman of the Year.

Wilfred Jack Dendel

Wilfred Jack Dendel was born December 26, 1924 on a farm that has been owned by the same family since 1862. Jack was the fourth generation to own and operate this successful farm. He entered into a partnership with his father in the dairy and apple enterprise which continued until his father's retirement.



In addition to the dairy herd, the 520 acre farm was also a well known fruit farm. The apples and cider were marketed through grocery outlets throughout South Western Michigan.

Jack started his registered Guernsey herd in 1949. In 1951 he bought his first adult cow Evelyn Ruth for \$600 and from that cow the successful Ruth family continued. Jack's purebred herd of Guernsey cows grew to 150 registered cows and was ranked among the top five herds in the state of Michigan for many years. His herd became one of the better herds in the country both in type and in production. Several cattle in his herd were nationally known.

Jack found time to serve his fellow dairymen as a leader in many dairy related organizations. He helped develop and served for 10 years on the Allegan County Dairy Council. He served as the director of the Allegan County DHIA local and was president of the Allegan County Michigan Animal Breeders Cooperative. For over 15 years he served on the Board of Directors of Kalamazoo Milk Producers Association and then became vice-president.

He served on the Michigan Guernsey Breeders Association board, was vice-president and president of the American Dairy Association of Michigan. For 21 years he served as vice-president and president of Michigan Animal Breeders Cooperative. He was a member of the State Dairy Council and the MSU Dairy Department Advisory Council. He also served as chairman of the Guernsey Committee of Select Sires and was also active in the breeding industry both locally and nationally.

Jack also displayed his leadership skills on many national boards. He served as director at large and 1st vice-president to the board of the American Guernsey Cattle Club. He served on the executive committee of the National Association of Animal Breeders. He was vice-president and president of National Purebred Dairy Cattle Association.

Also in recognition of his abilities he had been asked to serve on the Board of Dairy Research, Inc. (DRINC) and the United Dairy Industry Association.

Some of Jack's greatest honors were being recognized as the 1970 Dairyman of the year by the MSU Dairy Department and in 1973 he received the "Distinguished Service to Agriculture" award. In 1987 he received the Master Breeder Award from the American Guernsey Cattle Club in recognition of his contributions in breeding Guernseys.





2010 Dairy Memorial Honorees

John H. Pell

John Herman Pell was born on his family's farm on November 19, 1950, and spent 40 years dedicated to the dairy industry as a farmer, cooperative board member and industry leader.



He started working on the farm while in high school and took college prep course work because he intended to become a teacher.

His father, Marvin Pell, invited John to farm with him and teaching was forgotten, but not learning. John attended the local community college and took business and science courses while starting to farm and moved to farming full time when his coursework was done. He married Patricia Alderink on July 12, 1972. The Pells have three daughters and a son who helped on the farm while growing up and are now successfully employed in Michigan.

The farm in Fremont, Michigan consisted of over 800 acres plus additional rented ground. The Pells raise mostly corn, alfalfa, and some small grains. They milked 100-200 Holstein cows and raised their own replacements. The Pell Family was honored with the Newaygo County Conservation Farm of the Year in 1975 and they were also members of DHIA for several years, earning top Owner Sampled Herd for two years.

John is a member of Trinity Christian Reformed Church in Fremont. He served as a youth group leader for 10 years. He is a member of Farm Bureau and National Federation of Independent Businessmen.

John served the dairy industry on the Board of Directors of the United Dairy Industry of Michigan, serving on the executive board and budget committee and as a National Milk Producers Federation delegate. He served on the Michigan Dairy Market Program Committee for six years, serving as vice president for four years and president for one year. He served as President of the Board of Directors for the Michigan Dairy Memorial and Scholarship Foundation. In 1992, John was elected to the Board of Directors of the Independent Cooperative Milk Producers Association (ICMPA), to serve in the seat previously held for 18 years by his father, Marvin. John continued as a Mideast Area council member after ICMPA merged with DFA. John later served on DFA's corporate board for two years and continued to serve as a council member until his retirement from dairying in 2009.

Marvin M. Pell

Marvin Max Pell was born on May 15, 1923. He graduated from Fremont High School in 1941 where he was a member of Future Farmers of America.

Marvin worked in the Fremont Co-Op after graduating until he enlisted in the Army in 1943 in World War II.

He returned home in February 1946 and married Jessie (Luchies) Pell on June 28, 1946. They rented the family farm of his father, Neal Pell for one year and bought it the next year. He started with forty acres, sixteen cows and two horses. Soon he bought a Farmall tractor with a plow and cultivator for \$550.



Over the years, they added four boys and one girl to the family but he still works on the same farm and lives in the house in which he was born.

Marvin served on the board of Independent Cooperative Milk Producers Association from 1974 to 1992. When he stepped down, his son, John, was elected to serve in his place. Between the two generations, they served 35 years as leaders in their dairy marketing cooperatives.

2010 Dairy Memorial Honorees

Marvin and Jessie belong to Trinity Christian Reformed Church in Fremont, Michigan and have been members of Farm Bureau nearly all of their married lives. At the time of his recognition in 2010, God had blessed Marvin and Jessie with sixty-three years together.

Michael A. Schwab

“How can we help,” those are the words most likely to roll from the tongue of Mike Schwab whenever he heard of a neighbor’s crisis or a challenge facing the community. Without regard for his own issues or current challenges, Mike was always quick to lend a hand, a tractor or an ear to those in need. It was Mike’s undaunted compassion for his fellow farmer or neighbor that made him a well-liked and well-respected leader in the Michigan dairy industry.



A life-long dairy farmer, Mike and his family worked tirelessly in their community and within the associations that were important to them. For 17 years Mike served as chair of the Michigan Milk Producers Association (MMPA) Advisory Committee and Secretary of the MMPA Sunrise Local. His strong leadership style and knowledge of current issues concerning the dairy industry gained him the respect of his fellow dairy farmers across the state.

Mike also served on the United Dairy Industry of Michigan board of directors and was involved in several agricultural organizations. He was a true champion of the dairy industry, never missing the chance to encourage another farmer or to promote dairy products.

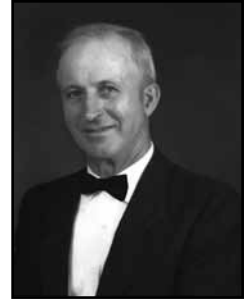
His passion for the dairy industry was reflected in the way he shared his love of farming with his family. He and his wife, Julie, raised three children: Philip, Matt and Melinda on the family dairy farm. Matt and his father became partners in the dairy farm, continuing the family’s farming legacy. Matt and Mike also became partners in the Pioneer seed corn business that Mike’s father had established.

Within his hometown of Standish, Mike served as president of the Standish-Sterling School board, was a volunteer firefighter, a 4-H leader and a Sunday School teacher.

Mike’s passing in 2010 leaves a void in the Michigan dairy industry. His honesty, integrity and genuine concern for others will be missed.

Archie Studer

Archie Studer was born on January 13, 1918, the seventh of eleven children of Albert and Jenny Studer, growing up on their farm east of Shelby, Michigan. After graduating from Shelby High School in 1937, he managed the family farm.



He served his country in World War II as a member of the Army. He attended the Army Air Force Technical Academy, Chanute AFB, IL, where he graduated with certification in Airplane Mechanics and Instruments. In October 1944, he was deployed to the Pacific Theatre as an Army Air Force Airplane Mechanic and Instrument Specialist in charge of all instrument work for the 316th Troop Carrier Squadron, first in Hawaii and later on Okinawa, Japan. He was honorably discharged with the rank of Staff Sergeant in January 1946.

He and his wife Elizabeth (“Betty”) moved to Casnovia, Michigan in 1951 where they established the Kenowa-Acres Dairy Farm.

Over the next 37 years, he bred and raised an outstanding herd of registered Holstein dairy cattle. Utilizing the Artificial Insemination certification he received in the early 1970s, he converted an unknown name to a frequently cited herd prefix for quality animals sold at the Great Lakes Classic sales in the 1970s and 1980s. Holstein Association USA records show 318 Kenowa-Acres female animals, including four Gold Medal Dams and five Dams of Merit, with 73 of them rated as Very Good and two as Excellent. At least three Kenowa-Acres male animals were selected for use in the AI program. He won many awards for his cattle herd, including DHIA High Herd award for Muskegon County for five years; 600 Honor Roll for his herd from the DHIA in 1980; and individual High Cow honors in 1961, 1981, and 1983.

He received recognition for his breeding efforts that produced Kenowa-Acres Maple Elevation. In 1981 as a four year old, this cow was ranked 3rd for fat nationally and, in Michigan, first for fat and third for milk production. Additionally in 1982 as a 5 year old, she was 52nd on the national list of top 200 cows while being ranked fourth in fat nationally and first in fat in Michigan.

In the 1960s and 1970s he was active in the Muskegon Co. 4-H, serving as a veterinary medicine leader and assisting as his three children (each later graduated from Michigan State University) participated in dairy, tractor, flower, and vegetable gardening programs. He was an MMPA member and participated in the Muskegon County DHIA from about 1953 until 1988, serving as president for two years.

After his herd was dispersed in 1988, Archie continued crop farming for ten years before moving to the Silver Maples Retirement Community in Chelsea, Michigan.





Erwin and Loretta Weber

Erwin and Loretta Weber were born and raised on dairy farms, and farmed on Erwin's family farm in Tuscola County where they still live today.

Erwin, born December 29, 1930, was the third of five children of Alvin and Ida (Petzold) Weber. He was born and raised in Arbela Township during the Great Depression. Loretta, born February 24, 1936, was the third of three children of Richard and Irene Knoll, dairy farmers near Richville. They attended Lutheran schools in one-room schoolhouses along with working on their family farms.



Following school, Erwin worked with his family on the farm to grow the operation while maintaining its clean and attractive appearance. During the Korean conflict, Erwin served 2 years at White Sands Proving Grounds. Loretta worked in Frankenmuth following school.

On October 13, 1956, Erwin and Loretta were married and began farming 160 acres with Erwin's parents. They added three girls and one boy to their family, each of whom helped on the farm while growing up. They eventually entered into partnership with their son Duane. At the time of their retirement, they milked 50 cows and farmed 450 acres.

Erwin and Loretta are active members of St. Paul Lutheran Church in Millington. A lifetime member of St. Paul, Erwin served on the Building Committee, Board of Trustees, Board of Elders and Board of Education. Loretta served as secretary and on committees of the St. Paul Dorcas Society. Together they are members of the church choir.

Erwin is past commander of the American Legion Conrad-Wager-Keene Post 164 and serves on the honor guard. He serves on the Arbela Township Fire Board and is a past member of the Board of Review.

Erwin and Loretta are parents of 4 children (Gloria LaPointe, Duane, Diane Bishop and Miriam Nielsen) who all live and work in Michigan. They have 12 grandchildren. Strong believers in family farming and the importance of agriculture, their values have been passed on to their children and grandchildren, three of whom have attended MSU in the dairy program.

Recognition through the Michigan Dairy Memorial and Scholarship Foundation is a fitting tribute to Erwin and Loretta's work ethic, family values and commitment to their community.

*When the occasion suggests flowers,
consider a living, growing tribute.
Make a contribution to:*

**Michigan Dairy Memorial and Scholarship
Foundation**

Where the earnings provide scholarships to worthy students in dairy
industry-related fields.

Make checks payable to: Michigan State University
Designate: Michigan Dairy Memorial and Scholarship Foundation (A10901)
Mail to: Dr. Miriam Weber Nielsen
Department of Animal Science; Michigan State University
1250E Anthony Hall, East Lansing, MI 48824-1225

Scholarship Recipients

The Michigan Dairy Memorial and Scholarship Foundation, Inc. awarded approximately \$90,000 in scholarships to undergraduates with a dairy interest at Michigan State University. Scholarships are awarded on the basis of academics, extracurricular involvement, and interest in a career in the dairy industry. For the 2010-2011 academic year, scholarships were awarded to the following individuals:

Karmen Jackson **Glenn and Anne Lake Scholarship**

Karmen Jackson is this year's recipient of the Glenn and Anne Lake Scholarship, which provided her with full tuition and fees through the MDMSF while she completed her senior year at Michigan State University.

Karmen graduated with a bachelor of science degree in Animal Science from Michigan State University this past fall.

"I chose to study Animal Science at MSU because I believe in raising animals for their contributions to human life," Karmen says. "The U.S. animal agriculture industry should be proud of where we are with the advances in production practices that have increased efficiency and allowed for safe and affordable products for consumers. However, nothing stays the same and I am excited to be a part of where we are going by blending generations of animal care with science and technology."

While at MSU, Karmen was involved in the MSU Dairy Club and earned the Outstanding Scholastic and Leadership Achievement Award from the American Dairy Science Association. She also participated in a study abroad program in Madagascar, for which she was awarded the Jack and Betty Barnes Scholarship. During her time in Madagascar, Karmen explored Madagascar's biodiversity crisis largely due to "slash & burn" agriculture destroying the rainforests and witnessed erosion and bleeding (red soil washing into the Ocean) due to unsustainable subsistence farming.

"I am sincerely grateful for the Glenn and Anne Lake and the Jack and Betty Barnes Scholarships for making my education through MSU on campus and in Madagascar possible," Karmen says.

Karmen is the daughter of Gale and Lisa Jackson, who own and operate CLAW Acres in Caro with Gale's two brothers. Her background milking and showing cattle piqued her interest in pursuing a career in the dairy industry. Karmen is currently working for Agri-Science Technologies in Michigan helping dairy farmers produce more milk per acre of feed, providing solutions to nutrient management compliance.

Joe Ankley **Russel Erickson Scholarship**

Joe Ankley, a senior studying Animal Science and Agriscience Education at Michigan State University, is this year's recipient of the Russel Erickson Endowed Scholarship. The \$5,000 scholarship was awarded to Joe based on his interest in a dairy related career as well as extracurricular activities,



and his academics at MSU, including being on the Dean's list five semesters. For his efforts, Joe has received several scholarships through the MDMSF throughout his college career.

"The Michigan Dairy Memorial Scholarship has been instrumental in helping me afford college throughout my undergraduate career at MSU," Joe says. "They have been extremely generous and the scholarships have helped me pay for tuition and other expenses. Russel Erickson was a great educator and I am honored that the selection committee saw that same passion for teaching about cattle and agriculture in me."

Joe chose to diversify his education by studying a dual-major in order to maximize his career options and fit in with his future goals. While at MSU, Joe has been active in student government, MSU Collegiate FFA, and the Block and Bridle and Avian Science clubs.

"I really enjoy animal science but have always had a desire to teach agriscience at a secondary level," Joe says. "Finishing both degrees has allowed me to keep many options open."

Joe is the son of William and Virginia Ankley, who own and operate the Ankley Family Farm in Imlay City. He plans a career path that will combine his desire to teach agriculture, as well as establish a creamery on his family's farm.

"Growing up on a dairy farm, I have always wanted to be part of the agricultural industry in the future, Joe says. "My goal is to teach agriculture and natural resources at a secondary level for a few years and then move back to the farm in hopes of diversifying the dairy into an agritourism location that offers milk, cheese and ice cream to consumers as well as educational programs."

Olivia DeVooght **Donald and Valera Murray Scholarship**

Olivia DeVooght, a senior studying Marketing and Animal Science at Michigan State University, is this year's Donald and Valera Murray Scholarship recipient. She was chosen to receive the \$4,000 scholarship based on her interest in a dairy related career, extracurricular activities and academics.

"Being awarded the Donald and Valera Murray Scholarship has helped me out so much my senior year at MSU," Olivia says. "Between the money I saved by raising 4-H animals and generous scholarships like this, I am able to concentrate on my schoolwork and activities instead of worrying about tuition."





While at MSU, Olivia is involved in the MSU Dairy Club, Professional Business Fraternity Phi Chi Theta, and had the opportunity to complete an internship with Dean Foods where she worked to market dairy products at Jilbert Dairy in Marquette. She recently completed an internship with Pfizer Animal Health as a Dairy Sales Specialist.

Olivia is the daughter of Bill and Mary DeVooght, owners of DeVooght Farms in Marquette. She chose to pursue a double major at MSU because she would like to work in the agriculture industry but felt it was important to learn practical business tactics and sales.

“Upon graduation I would love to work in a position that allows me to promote both dairy products and the integrity of the industry,” Olivia says. “I hope to also be able to continue to raise and show my own cattle.”

Henry Reinart

Harold and Lillian Gremel Scholarship

Henry Reinart, a first year Veterinary Medicine student at Michigan State University, is this year’s recipient of the Harold and Lillian Gremel Scholarship. Henry holds a Bachelor of Science degree in Animal Science from Michigan State University.

“I am really grateful that individuals such as the Gremels are willing to support students such as myself as we are accomplishing our goals of becoming involved in this industry,” Henry says of the \$3,500 scholarship that was awarded to him based on his interest in Production Medicine as a veterinary student at MSU.

Henry is the son of Chris Reinart of Hopkins, and plans to follow in his father’s footsteps as a dairy veterinarian.

“Ever since I was young, I rode around with my dad who is a dairy vet,” Henry says. “This sparked my interest and everything that I was involved with strengthened my interest. I really like working with animals and farmers as well as the science that is involved. I also like the fact that this career will allow me to problem solve on a daily basis.”

At MSU, Henry has been involved in FFA, CANR Student Senate, Leadership in Environmental and Agricultural Fields and the Food Animal Club. In addition to being a food animal veterinarian, he plans to return to his family’s farm where they raise beef cattle and sheep.



Jack and Betty Barnes International Michigan Dairy Memorial Endowed Scholarship (\$1,000)

The Barnes scholarship is provided through an endowment from Jack and Betty Barnes and is given annually to a student interested in a dairy industry career who is participating in an international experience to enhance his or her education. This year’s recipient was Karmen Jackson.

Krista Beeker of Constantine, MI will be graduating this spring with double majors in Animal Science and Environmental Studies and Agriscience, and is looking forward to a position in public relations or consumer and youth education. Her passion is to pursue a career with the communication side of the dairy industry and she plans to eventually pursue a Master's degree.

Melissa Brower of Jamestown, MI has been actively involved with her family dairy farm, and after graduation this spring, plans to enter a partnership and expand it with registered Jerseys. She has been active within the Michigan dairy industry, and expects to play a role in teaching youth.

Lauren Bush of Swartz Creek, MI is a sophomore in the production animal scholar program, planning for a degree in Veterinary Medicine specializing in dairy. She plans to continue her undergraduate studies while remaining active in 4H and MSU's Dairy Club.

Stacey Choate of Cement City, MI has another year of undergraduate studies with a double major in Environmental Studies and Agriscience with a concentration in Communications, and Animal Science with a concentration in Agriculture Business Management. When she graduates she wishes to pursue a career in the promotion or inspection of dairy products.

Melissa Erdman of Minden City, MI served as the 2010 Michigan Dairy Ambassador, and studied Dairy Husbandry and the Environment in the Netherlands last summer. She interned with Dairy Management, Inc. and participated on the 2011 National Dairy Challenge team. Melissa plans to work in the dairy industry.

Cally Hass of Cassopolis, MI will be graduating this spring with a B.S. in Animal Science specializing in Animal Industry, with a minor in Agribusiness Management. A highly motivated individual, Cally's aspirations include making positive strides in the animal production industry, educating the youth, serving political office, and raising a family on her own swine and cattle farm.

Jillian Holdwick of Harbor Beach, MI will be graduating this spring to pursue a career in the dairy industry or enter graduate school in dairy nutrition. She has participated in FFA, MSU Block and Bridle Club, the 2011 National Dairy Challenge Team, and worked part-time as a research assistant in a dairy nutrition lab.

Tera Koebel of Three Oaks, MI has already won many agricultural honors and awards which are helping to assist with her undergraduate goal of exploring different occupations within agriculture. Highly motivated and successful in her academic career, she has been active in FFA, 4-H, MSU Dairy Club, MI Junior Holstein Assoc, MI Jersey Cattle Club, Collegiate Farm Bureau and Sigma Alpha Sorority, and traveled to South Africa with the MSU Freshman Seminar Abroad Program, and worked part-time on her family's farm.

Jessica Makowski of Macomb, MI has a keen interest in working in the dairy industry. She has experience with research in MSU laboratories, has been a lab technician in the MSU Meats Lab, and has gained skills working in industry. After graduation this May, Jessica is planning a career in the agricultural industry.

Kevin Messing of Bad Axe, MI has taken a circuitous path through the world of diesel engineering, to realize his true interest is in Biosystems and Agricultural Engineering. He plans to obtain a position in food process engineering after graduation in 2012.

Elizabeth Motz of St. Johns, MI, is pursuing a double major in Agribusiness Management and Animal Science. She served as the president of the MSU Student Chapter of the National Agricultural Marketing Association. She has demonstrated her leadership and zeal, along with her commitment and passion to the dairy industry.

Lynnae Slavik of Ashley, MI is exploring her love of the dairy industry by majoring in Animal Science, with an Agri-business Management Specialization, and being very active in the MSU Block and Bridle Club, Dairy Club, FFA and the Dairy Cattle Judging Team. She is planning a career in the AI industry.

Eric Sneller of Sebawaing, MI is a junior in Animal Science. He has participated in FFA, MSU Dairy Cattle Judging, and the Midwest Regional Dairy Challenge. He foresees a future whereby he plays a role in helping the dairy farmers and the industry, while working on his own family's dairy.

Deidre Bowen of Cass City, MI expects to graduate next December





Freshman Scholarships \$1,500:

Leah Cardona of Chicago, IL is passionate about Food Science. Her dream is to create flavorful alternative foods that are safe for people with dairy allergies.

Emily DeVooght of Marquette, MI is a freshman in Animal Science, who has plans to become a large animal veterinarian. She has been active in the MSU Dairy Club and works at the DHI Milk Testing Laboratory.

Kaitlyn Eisenga of Marion, MI came to MSU after attending Northwestern Michigan College, and plans to graduate this year with a degree in Dairy Management.

Katelyn Horning of Manchester, MI intends to complete her Animal Science degree in 2014. Active in 4-H for eleven years, Katelyn has become passionate about promoting the dairy industry.

Ned Lindsey of Tekonsha, MI has a solid basis in the dairy industry, being raised on his family's farm. His intention is to use his Dairy Management education to expand and increase the efficiency of his own farm.

Ag Tech Scholarships \$2,000:

with her degree in Dairy Management. She plans to continue working at the dairy she has been employed with for over two years, and hopes to eventually establish her own farm.

Ashley Blight of Bancroft, MI has a career plan which includes attaining an associate degree in Dairy Management, after her Ag Tech degree from MSU. Along with eleven years in 4-H and four years in FFA, being raised on a dairy farm has prepared her for her goal of owning her own farm in the future.

Dale Dick of McBain, MI graduated

in December with a Dairy Management degree, and is planning to work with his family on their farm.

Katie Szymanski of Snover, MI is enrolled in the Ag Tech Program, with a major in Agricultural Industries. She plans to pursue a career in dairy management.

Jamie Atherton of Gaines, MI will graduate this year from the Dairy Tech program. She hopes to find a sales career in dairy supplies. Being active in FFA, and the experiences gained from her family dairy will help her achieve her goal.

Dairy Product Evaluation Team - Fall 2010

On Friday, November, 12, 2010, the MSU Dairy Products Evaluation Team completed the competitive season at the National Intercollegiate Dairy Products Evaluation contest at the Archer Daniels Midland Research Center in Decatur, IL. The Undergraduate team included Amanda Feighner, Jeff LaPalme and Allen McGee and Kushal Chandak represented MSU in the Graduate Division.

The team finished in 7th place among the nine US and one Canadian teams.

Although the team finish was not as strong as hoped for there were some bright notes on a individual basis. Amanda Feighner finished 4th in Butter and 5th in Milk and Jeff LaPalme finished

in the money with a 2nd in Cottage Cheese. Kushal Chandak finished in a tie score for second place but lost on the tie breaking procedure for an official 3rd place out of 8 graduate students from 7 different universities. He finished in 2nd place in Milk, Cheddar cheese and Cottage Cheese and 3rd in Ice cream. On Saturday October 23, 2010, the team competed against 6 other universities in the Regional contest held at the Kraft Technical Center in Glenview, IL. Amanda finished 4th in Milk and Allen finished 4th in butter. The interaction with students, faculty and industry personnel was very valuable as were the tours of two outstanding research and development facilities.

MSU Dairy Judging Program

By Joe Domecq

The Michigan State University Collegiate and Ag Tech Dairy Judging Teams and over 25 Michigan 4-Hers interested in being members of teams that represent Michigan in national contests, spent many summer and fall weekends visiting farms and judging cows in preparation for the 2010 judging season. The teams visited dairy farms in Michigan and across the Midwest. A weekend practice trip over Labor Day weekend to the Maryland State Fair included almost 30 classes of cows and heifers and the opportunity to watch several outstanding breed shows, visit Inner Harbor in Baltimore, and tour the battlefield in Gettysburg, PA. The hard work resulted in outstanding results at three national dairy judging contests and another invitation to the Royal Highland Judging Competition in Scotland.

The 2010 MSU Collegiate Dairy Judging Team members were Krista Beeker (Centreville), a senior in Animal Science, Jessica Makowski (Macomb), a senior in Animal Science, Sara Mowry (Burlington), a senior in Ag Business, and Lynnae Slavik (Ashley), an Animal Science senior. The MSU Ag Tech Dairy Management Program was represented by John Anibal (Byron), Dale Dick (McBain), Cristine VanLieu (Reading), and Ross Williams (Homer).

The first contest of the year was at the Pennsylvania All-American Dairy Show in Harrisburg, PA. The MSU Collegiate Team and Michigan 4-H Team participated in the contest. The Collegiate Team placed 9th in Brown Swiss and Guernseys, 10th in Holsteins and 11th overall.



The Michigan Dairy Judging program visited the Maryland State Fair. Judges included (left to right) Front: Krista Beeker, Jessica Makowski, Casei Hart, Tera Koebel, Carmen Zwemmer, Megan Bush. Middle: Heather Fry, Sarah Michalek, Lauren Bush, Katelyn Horning, Kailey Sweers, Levi Westendorp. Back: Jessica Fry, Lynnae Slavik, Ross Williams, Sara Mowry, Matt Mann, Joe Kotecki, Dale Dick, Hayleigh Geurink, J.W. Hart, Dr. Joe Domecq.



The MSU Collegiate Dairy Judging Team included (left to right) Sara Mowry; Lynnae Slavik; Jessica Makowski; Krista Beeker; and Dr. Joe Domecq, coach.

In early October, the Collegiate, Ag Tech, and 4-H Teams traveled to Madison, WI for the national contests at World Dairy Expo. The Collegiate Team placed 7th in Red and Whites, 8th in Ayrshires, 9th in Brown Swiss, 11th in Holsteins, and 11th overall. Lynnae was 2nd in Brown Swiss, 7th in Ayrshires, 10th in Red and Whites, and 11th overall.

The Ag Tech Team placed 1st in Milking Shorthorns, 3rd in Red and Whites, 4th in Jerseys, 5th in Brown Swiss, and 6th overall. Cristine was 3rd in Ayrshires. John was 4th in Milking Shorthorns. Dale was 2nd in Brown Swiss, 3rd in Milking Shorthorns, 8th in Red and Whites, and 8th overall. The final contest of the year was held at the North American International Livestock Exposition in Louisville, KY in November. The Collegiate Team placed 4th in Holsteins, 5th in Jerseys, 6th in Brown Swiss, 7th in Guernseys, 8th in oral reasons, and 5th overall. Sara was 8th in Brown Swiss. Lynnae was 3rd in Jerseys, 8th in Guernseys, 4th in reasons, and 7th overall.

The Ag Tech Team had an outstanding day. They placed 1st in Ayrshires and Brown Swiss, 4th in Jerseys, 6th in Guernseys, and 4th in reasons and overall. Individually, Cristine was 3rd in Holsteins. John was 1st in Brown Swiss, 3rd in Guernseys and Jerseys, 9th in Ayrshires, 8th in reasons, and 3rd overall. Dale was 1st in Ayrshires and Guernseys, 4th in Brown Swiss, 3rd in reasons and 5th overall.

The Collegiate and Ag Tech team members are selected from students attending Michigan State University who have completed a judging course and have been part of the judging program during their education at MSU.

The MSU Dairy Judging Team would like to extend special appreciation to the Michigan Dairy Memorial and Scholarship Foundation for their support of the MSU Dairy Judging Program.





Former MDMSF Scholarship Recipients

What Are They Doing Now?

Charles Randall (1967, BS, Dairy Science, MSU) milked cows until 1995, now farming with crops and hogs in Osseo, Michigan.

Michelle (Hyde) Neff (2001, BS, Ag & Natural Resources Communications, MSU) Now with MSU Extension-Clare County as the 4-H Youth Educator in Harrison, Michigan.

Nancy Blaauw (1982, BS, Animal Science, MSU) Financial Service Officer and Leasing Specialist for GreenStone Farm Credit Services in Allegan, Michigan.

Autumn (Seiffert) Rector (2009, BS, AgriBusiness, MSU) Credit Analyst for GreenStone Farm Credit Services in Traverse City, Michigan.

Karen (Green) Batora (1982, BS, Animal Science, MSU) now High School Math teacher at Ovid-Elsie Schools, Elsie, Michigan.

Mary (TenBrink) Costigan (2009, BS, Animal Science, MSU) now farming on family farm in Coopersville, Michigan.

IRA Charitable Rollover Permitted by IRS

Congress has re-authorized the provision that allows donors to make tax-free charitable gifts from their IRA accounts in 2010 and 2011. Individuals who are age 70 ½ and older will be able to make gifts totaling up to \$100,000 from traditional IRAs to qualified charities if they act by December 31, 2011. For more information, contact Assistant Director of Development Megan Hirschman at hirschm8@msu.edu or 517-432-2482 (office).

To qualify:

- You must be age 70 ½ or older at the time of gift.
- Transfers must be made directly from a traditional IRA account by your plan provider to Michigan State University. Funds that are withdrawn by you and then contributed do NOT qualify. Gifts from 401k, 403b, SEP and other plans do not qualify.
- Your plan administrator may make the check out to Michigan State University and mail the check to you. But you must postmark the check to us by December 31, 2011 for the 2011 tax year.
- Gifts must be outright. Distributions to donor-advised funds, certain supporting organizations, or life-income arrangements such as charitable remainder trusts and charitable gift annuities are not allowed.

Benefits – Qualified charitable distributions:

- Can total up to \$100,000;
- Are not included in your gross income for federal income tax purposes on your IRS Form 1040 (no charitable deduction is available, however);

Example: Suppose John has \$500,000 in an IRA and he also wants to contribute \$20,000 to Michigan State University. He can authorize the administrator of his IRA to transfer \$20,000 to MSU and \$5,000 to himself. The \$20,000 distributed to MSU will not be subject to federal tax and will be counted toward his annual minimum required distribution.

Board Member Spotlight

In this issue of the newsletter, we are featuring Remus Rigg and John Stout. Remus has been on the MDMSF Board of Directors for 24 years and John has served on the MDMSF Board for 16 years.

Why did you become involved with the MDMSF?

Rigg: Either as a dairy producer or processor, we need all the education we can gather and what better place to gain that than at MSU.

Stout: I became involved with MDMSF while working as the director of quality control for Country Fresh Dairy. I had always appreciated the work done by MDMSF in honoring dairy leaders and was a past scholarship recipient myself. So when asked to become a board member of MDMSF it gave me an opportunity to repay MDMSF for the help I received while attending MSU.

What do you feel is the most significant accomplishment of the MDMSF throughout your involvement with the MDMSF Board?

Rigg: The number of students that MDMSF is able to help financially and the interviewing of students seeking scholarships by the interviewing committee of the MDMSF Board.

Stout: I would say the most significant accomplishment of MDMSF during my involvement has been the ability to provide financial aid to the large number of deserving dairy oriented students during both bad times as well as good. This has helped to provide our industry with the young leadership we need now and in the future. MDMSF has also provided a great platform to honor our dairy industry friends and associates for their work and leadership in the industry.

What message do you have for students considering a career in the dairy industry?

Rigg: Many of us have had great careers in the dairy industry and they are open to anybody that wants to take advantage of them now and in the future. Get a good education and go for it.

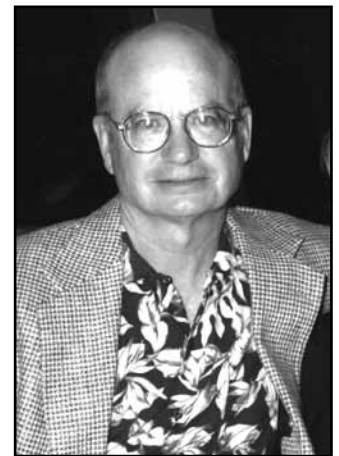
Stout: For students considering a career in the dairy industry I would like them to know that it is one of the few industries that work together. The dairy producer, dairy plant personnel, state regulatory officials, co-op employees, and the many others associated with the dairy industry all want the dairy products we produce to be the best they can be. To that end, we in the dairy industry often work closely together, almost like a big family. I had a rewarding and fulfilling career in the dairy industry. With hard work and interest in the industry you can also.

Is there any other information you would like to share with donors, scholarship recipients, etc. regarding the MDMSF?

Stout: For the past donors to MDMSF I would like to say thank you. If you could have seen all the bright, enthusiastic students that MDMSF has been able to help over the years you would know your contributions have been well spent. To my fellow scholarship recipients, please do not forget MDMSF. We need your continued support both in recognizing dairy people that should be honored as well as contributions.



Remus Rigg



John Stout

Former MDMSF Scholarship Recipients

What are you doing now?

The MDMSF is developing a list of the various occupations in which former scholarship recipients are now involved. Please help us update our scholarship recipient records by completing the form below and returning it to Dr. Miriam Weber Nielsen.

Name: _____

Address: _____

Home Phone (optional): _____

e-mail (optional): _____

Major (s): _____

Degree (s), year(s) graduated : _____

Current occupation (title or position, employer name and location): _____

Mail, fax or e-mail to Dr. Miriam Weber Nielsen at: Department of Animal Science, MSU 1250E Anthony Hall, East Lansing, MI 48824-1225 / Fax: 517-353-1699 or email: msw@msu.edu





Thank you letters

I am honored to be one of the recipients of the Dairy Memorial Scholarships. I am the first in my family to attend college, and your support has been very helpful. I have always dreamed of studying agriculture at MSU and I am proud to say that my dream has become a reality. Without scholarship patrons like you, there would be many students unable to pursue the career they have dreamed of. In the future, I wish to combine my education and dairy interests into an occupation where I can promote the dairy industry. Thanks again!

Stacy Choate

Thank you so much for awarding me with one of your scholarships. I am so grateful for all of your support through my years of schooling at MSU. It is awesome to see how people from the industry are willing to give back, and invest in the leaders of the next generation. I hope to be a part of the dairy industry for many years to come – ready and willing to make an influence. Thank you again for supporting me over the years!

Lynnae Slavik

Thank you for the scholarship I received. I really appreciate it. I am excited to start my last year in school and pursue my dreams in the agriculture and dairy communications field.

Krista Beeker

Thank you for selecting me to be one of the recipients of the Michigan Dairy Memorial Scholarship for 2010-2011 school years. The dairy industry is an aspect of my life I am extremely passionate about and intend on pursuing further. It is because of your continued generosity that students like me can become more educated and in turn give back to the industry.

Jillian Holdwick

Thank you so much for selecting me for the 2010-2011 Dairy Memorial Scholarship! It is greatly appreciated and will definitely be used next year for my tuition and books. Thank you once again!

Jessica Makowski

Thank you for selecting me for the Michigan Dairy Memorial Scholarship. This scholarship will help me advance not only in the educational world but also the dairy industry as a whole. Once again, thank you very much for your support.

Melissa Erdman

I would like to express my greatest appreciation for your generous contribution in support of my college education at MSU. Your financial assistance will allow me to focus more time and effort on school work and less time working just to make ends meet.

I have really been enjoying my classes at MSU, as I am majoring in agri-business management with a focus in the dairy industry. I have more confidence in my future, knowing that the people I look up to in the dairy industry believe in my ability to succeed.

Tera Koebel

I would like to thank you all so much for picking me to receive the dairy memorial scholarship for the 2010-2011 academic year. The money will come in handy for paying for my college. This scholarship will help me possibly return to the family farm or pursue a job in the Ag related field. I would also like to thank everyone who donates money for the foundation because the dairy and Ag industries are important in today's economy.

Katie Szymanski

I feel my time as a Spartan is time well spent and I would like to sincerely thank you for helping make that possible with the Glenn and Ann Lake Michigan Dairy Memorial Scholarship.

There is not a group I would rather be affiliated with; I am proud to be a part of the agriculture community here on campus. It can be a challenge to stay positive when it seems like our profession is questioned and ridiculed. At times, it seems like the whole world is against our way of life. When the natural therapy of being home on the farm isn't accessible here at school, it is Anthony Hall where I find refuge and refueling. My professors and classmates are as passionate about animal agriculture as I am and it is encouraging.

Michigan Dairy Memorial & Scholarship Foundation, thank you for making these experiences possible. Thank you for the opportunities my studies at MSU have given me.

Karmen M. Jackson

I would like to thank you very much for selecting me to receive the Michigan Dairy Memorial Scholarship. This is a great honor to me and will really help me out with paying for my education. I plan on taking what I learn at Michigan State University and applying it to a future career in the dairy industry. One day down the road, I hope to start my own farm. I plan on working hard and achieving this goal. Thank you again for this wonderful opportunity.

Deidre Bowen

Thank you for selecting me for this scholarship. I really appreciate that you selected me. Someday I would enjoy having the option to help others out as you have.

Ned Lindsey

Thank you very much for the scholarship that has been awarded to me for the 2010-2011 academic year. It will be a lot of help with my college expenses at Michigan State University. Your generosity is greatly appreciated.

Ashley Blight

I would like to take this opportunity to thank everyone from The Michigan Dairy Memorial and Scholarship Foundation for awarding me this scholarship. Receiving this scholarship has given me the chance to continue my education and work toward my dream of becoming a Food Technician specializing in Dairy. I greatly appreciate your generosity.

Leah Rebecca Cardona

Thank you for selecting me as a recipient of the Michigan Dairy Memorial Scholarship. I am honored to accept the challenge of becoming a leader in the dairy industry. Education is the most important thing someone can invest in and I am grateful that you chose to do that. I am very fortunate and thankful to receive this scholarship.

Dale Dick

Thank you so much for choosing me for a recipient for the Michigan Dairy Memorial Scholarship. I really appreciate it. This money will greatly help me as I further my education. I am currently an Animal Science major and I am planning on pursuing a career in the dairy industry after graduation. The Dairy Memorial Scholarship will help to make this goal possible.

Katelyn Horning

Thank you for supporting the MSU Dairy judging Program. Your financial support is greatly appreciated. We have been able to travel to many farms and contests this fall because of your support. Dairy Judging has increased our knowledge of the Dairy Industry and we have developed valuable communication skills. We cannot thank you enough!

The Dairy Judging Team

Investing for the future- Our Endowment at glance

This year we are happy to report that the endowments are up. As of 9/30/2010 MSU was earning an average of 8.4% on the Common Investment Fund. Because of this upturn, now is the perfect time to give to the Michigan Dairy Memorial Scholarship to watch your money grow, and benefit our students for generations to come.

Thanks to the generosity of many supporters over the years, \$837,628 has been contributed to the MDMSF endowment and \$97,083 is available in FY 11-12 for dairy science programs and student scholarships.

Your gift to the MDMSF endowed fund provides a long-term, dependable source of funding, ensuring that generations of students pursuing careers in the dairy science industry will be able to count on scholarship help from the MDMSF.

Please consider making a donation today. It makes a huge difference.





Michigan Dairy Memorial and Scholarship Foundation
Michigan State University
1250E Anthony Hall
East Lansing, MI 48824

Non-Profit Org.
U.S. Postage
PAID
East Lansing, MI
Permit No. 21

Please make checks payable to Michigan State University, designate for MDMSF and forward with this completed form to:

Michigan Dairy Memorial and Scholarship Foundation
Dr. Miriam Weber Nielsen
Department of Animal Science
Michigan State University
1250E Anthony Hall, East Lansing, MI 48824-1225

..... 
Contributions to MDMSF (A10901)

Appeal Code 01034

Enclosed is my total contribution of \$ _____ **OR**

Enclosed is my initial contribution of \$ _____

Please send me pledge reminders:

_____ annually; _____ semi-annually; _____ quarterly

Name _____

Address _____

Home Phone _____

Please Send Me More Information on: **A personal visit or other assistance**

MDMSF Honoree Recognition **Joining MSU donor recognition clubs**